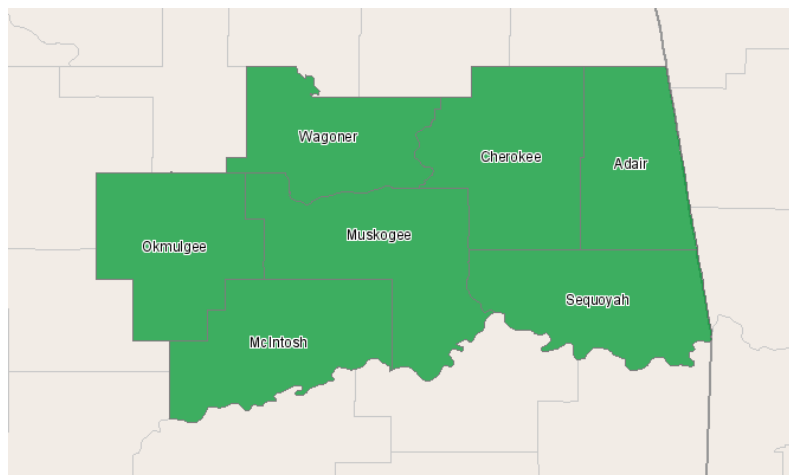


Eastern Workforce Investment Board



P.O. Box 2698
Muskogee, Oklahoma 74402

Industry Overview Report



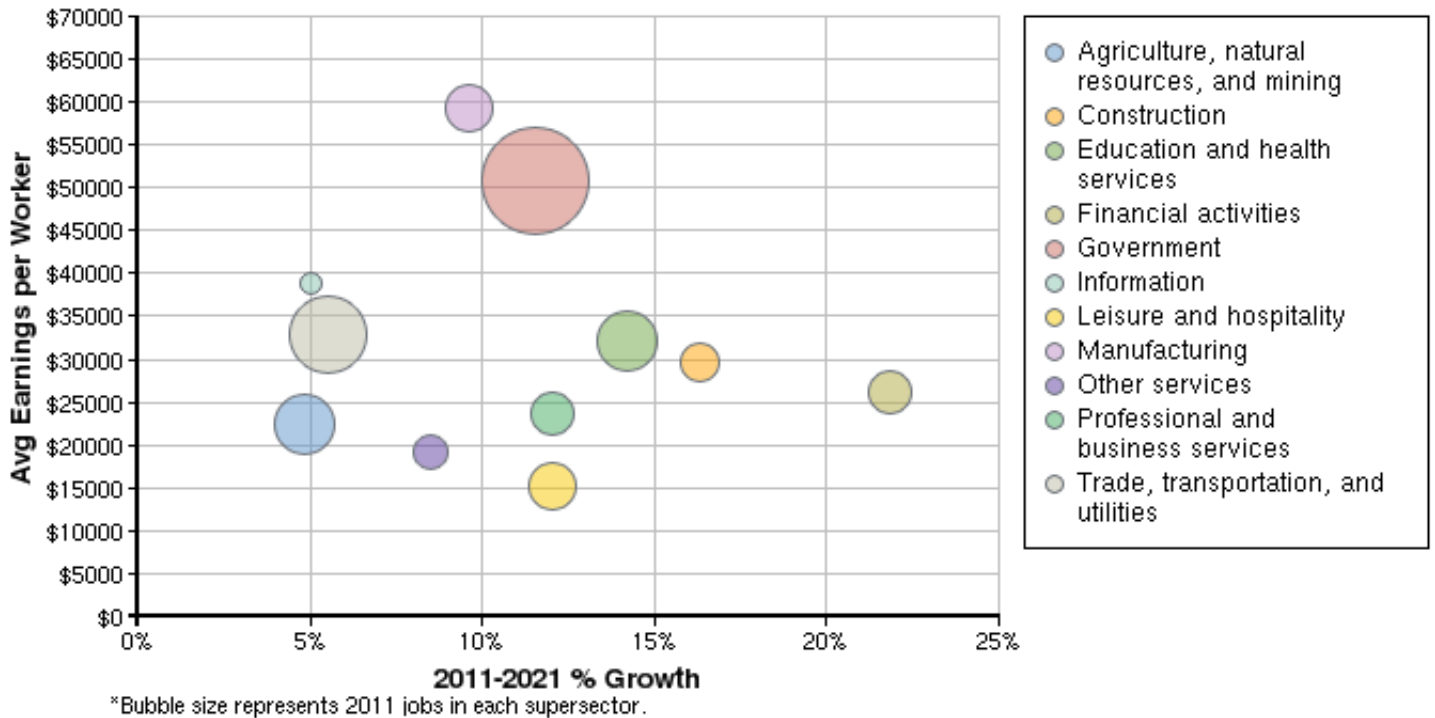
Region Info

Region: EWIA

County Areas: Adair, Oklahoma (40001), Cherokee, Oklahoma (40021), McIntosh, Oklahoma (40091), Muskogee, Oklahoma (40101), Okmulgee, Oklahoma (40111), Sequoyah, Oklahoma (40135), Wagoner, Oklahoma (40145)

Industry Size and Growth

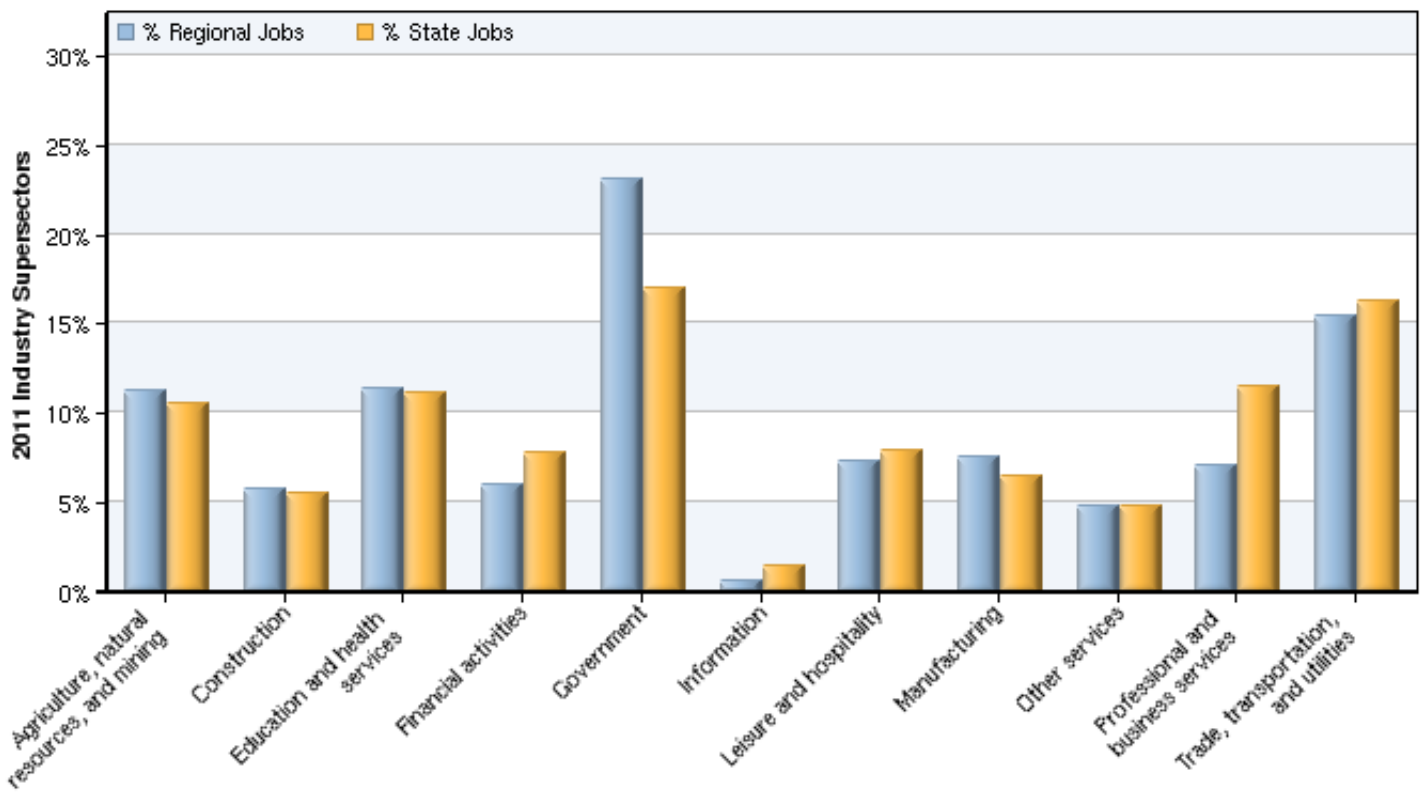
2011 - 2021 Size and Growth



Description	2011 Jobs	2021 Jobs	Growth	% Growth	2011 EPW
Agriculture, natural resources, and mining	13,581	14,241	660	5%	\$22,490
Construction	6,991	8,133	1,142	16%	\$29,722
Education and health services	13,783	15,738	1,955	14%	\$32,059
Financial activities	7,245	8,827	1,582	22%	\$26,280
Government	27,995	31,226	3,231	12%	\$50,808
Information	779	818	39	5%	\$38,874
Leisure and hospitality	8,891	9,963	1,072	12%	\$15,184
Manufacturing	9,128	10,006	878	10%	\$59,231
Other services	5,779	6,270	491	8%	\$19,139
Professional and business services	8,595	9,631	1,036	12%	\$23,722
Trade, transportation, and utilities	18,680	19,710	1,030	6%	\$32,934
Total	121,445	134,563	13,118	11%	\$34,612

Source: EMSI Complete Employment - 2011.2

2011 Industrial Makeup



Description	2011 Regional Jobs	% Regional Jobs	2011 State Jobs	% State Jobs
Agriculture, natural resources, and mining	13,581	11.2%	222,210	10.5%
Construction	6,991	5.8%	116,052	5.5%
Education and health services	13,783	11.3%	235,961	11.1%
Financial activities	7,245	6.0%	165,892	7.8%
Government	27,995	23.1%	360,568	17.0%
Information	779	0.6%	30,311	1.4%
Leisure and hospitality	8,891	7.3%	168,142	7.9%
Manufacturing	9,128	7.5%	135,897	6.4%
Other services	5,779	4.8%	100,879	4.7%
Professional and business services	8,595	7.1%	244,242	11.5%
Trade, transportation, and utilities	18,680	15.4%	344,192	16.2%

Source: EMSI Complete Employment - 2011.2

Data Sources and Calculations

Industry Data

In order to capture a complete picture of industry employment, EMSI basically combines covered employment data from Quarterly Census of Employment and Wages (QCEW) produced by the Department of Labor with total employment data in Regional Economic Information System (REIS) published by the Bureau of Economic Analysis (BEA), augmented with County Business Patterns (CBP) and Nonemployer Statistics (NES) published by the U.S. Census Bureau. Projections are based on the latest available EMSI industry data, 15-year past local trends in each industry, growth rates in statewide and (where available) sub-state area industry projections published by individual state agencies, and (in part) growth rates in national projections from the Bureau of Labor Statistics.

State Data Sources

This report uses state data from the following agencies: Oklahoma Employment Security Commission.